

Molytrac



PHOSYN

For the treatment of molybdenum deficiency
by foliar application

250 g/l molybdenum (Mo)



Improve both yield and quality with this easy to use, highly concentrated molybdenum liquid, made specially for foliar application to plant leaves.

Molytrac is a formulated product for the treatment of molybdenum deficiency by foliar application.

High quality and consistent liquid solution. No sedimentation. No need to solubilise with water.
Mixes with water at all normal temperatures.

Suitable for tank mixes, visit www.tankmix.com/yara

Molytrac is safe for crops and operators.

Trialled and tested in many different crops and countries rapid uptake by the plants
Lasting feeding effect

Highly concentrated true liquid

Easy to Use

Widely tank mixable – Visit www.tankmix.com



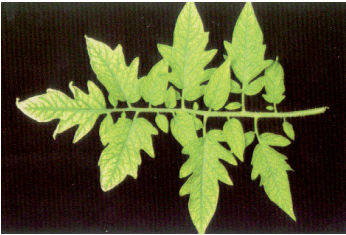
Certificate No: 301/93
PHOSYN plc - UK

Always read the label before using the product.
For tank mix information please contact your local distributor
or visit www.tankmix.com

APPLICATION RATES AND TIMINGS



Molybdenum (Mo) - Sunflower



Molybdenum (Mo) - Tomato



Molybdenum (Mo)- Brassica

Beans (Field Grown): 500 ml/ha at the 4 to 6 leaf stage. For moderate to severe deficiency, repeat applications should be made at the above rate at 10 to 14 day intervals from the first application. Water rate: minimum 30 l/ha.

Broccoli, Cabbage, Chinese Cabbage: 250 to 300 ml/ha from 4 to 6 leaf stage. For moderate to severe deficiency, repeat applications should be made at the above rate at 10 to 14 days intervals. Water rate: minimum 30 l/ha. Seedlings for transplanting: 5 ml per 5 l water over 1000 plants.

Carrot: 250 ml/ha applied 10 to 14 days after transplanting or when crop is 15 cm tall. Water rate: minimum 200 l/ha.

Cereals: 250 mls/ha from the 5 leaf stage until the end of tillering (Zadoks G.S. 15 to 29). Water rate: minimum 30 l/ha.

Groundnuts/Peanuts: 0.25 l/ha at the 4 to 6 leaf stage. Consider a second application 10 to 14 days later. Water rate: minimum 30 l/ha.

Maize: 0.25 to 0.5 l/ha at the 6 to 8 leaf stage. Water rate: minimum 50 l/ha.

Nursery Stock/Ornamentals: 125 mls/ha as soon as there is sufficient leaf area to intercept a spray. Repeat at 10 to 14 day intervals as necessary. Avoid applications during flowering. Spray a maximum of three applications per crop per annum. Water rate: minimum 100 l/ha.

Onion: 0.25 to 0.5 l/ha applied as soon as there is sufficient leaf cover to intercept the spray. Repeat two weeks later if necessary. Water rate: minimum 50 l/ha.

Peas (Field Grown): 250 to 500 ml/ha when plants are 5 to 15 cm tall. For moderate to severe deficiency, repeat applications should be made at the above rate at 10 to 14 day intervals from the first application. Water rate: minimum 30 l/ha.

Potatoes: 0.5 l/ha between 100% emergence and tuber initiation. Water rate: minimum 50 l/ha.

Protected Crops: 0.025 litres per 100 litres water maximum concentration. Water rate: 1000 l/ha maximum. Refer to equivalent field grown crop for application timing.

Sugar Cane: 0.5 l/ha when cane is between 30 and 120 cm tall. Repeat applications may be necessary at 10 to 14 day intervals. Water rate: minimum 30 l/ha.

Sunflower: 0.25 to 0.5 l/ha from the 4 leaf to flower bud stages. Water rate: minimum 50 l/ha.

Tomato (Field Grown): 250 ml/ha when crop is 15 cm tall. Water rate: minimum 50 l/ha.

For complete recommendations please visit www.greenbookinfo.com

Always read the product label before use

Always read the label before using the product. For more information on Phosyn and Phosyn products visit www.phosyn.com.

Regional Distributor:

o:k/molytrac 05/06
©Phosyn 06